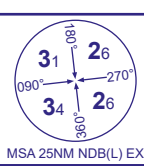
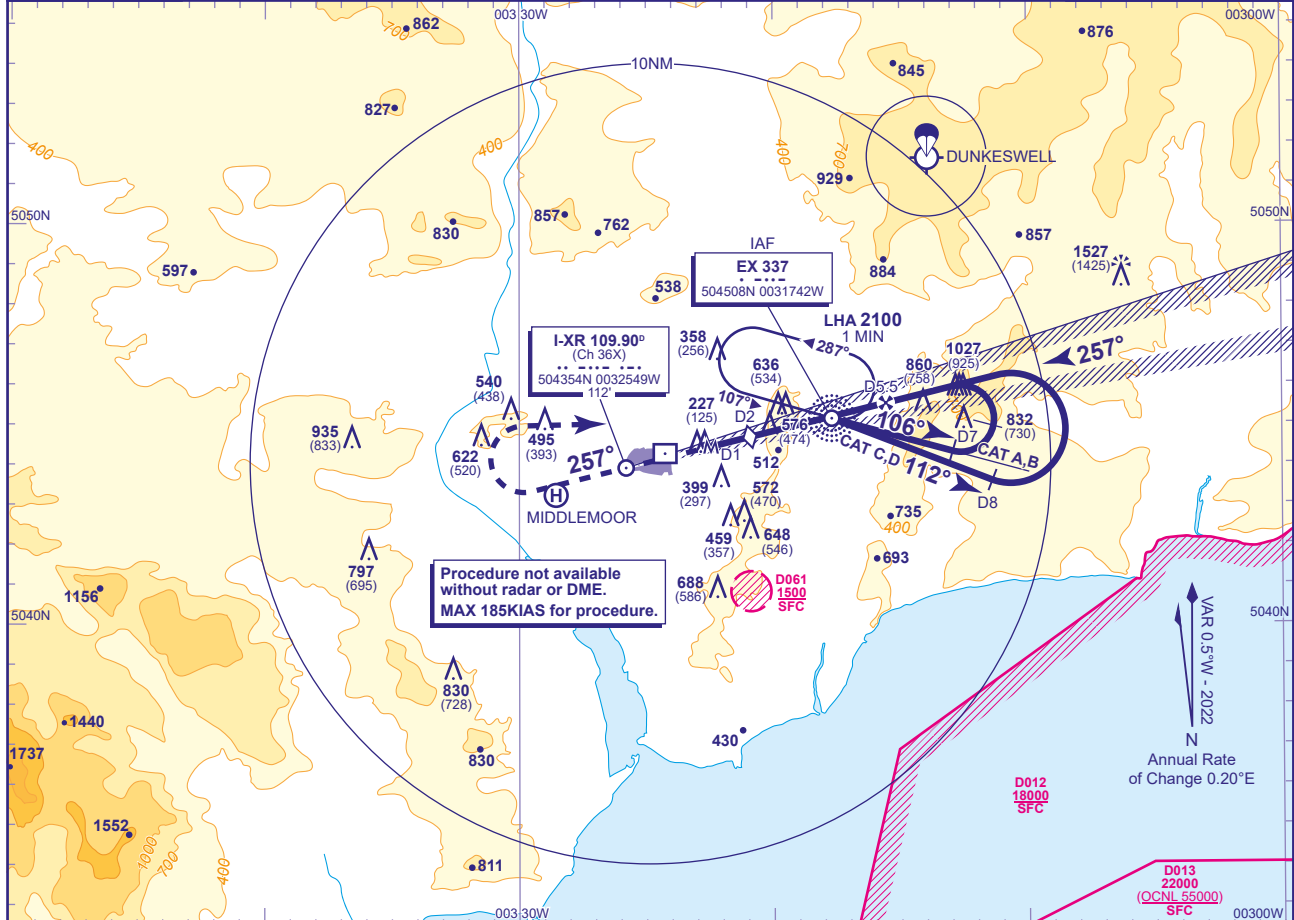


LOC/DME/NDB(L)
RWY 26
(ACFT CAT A,B,C,D)

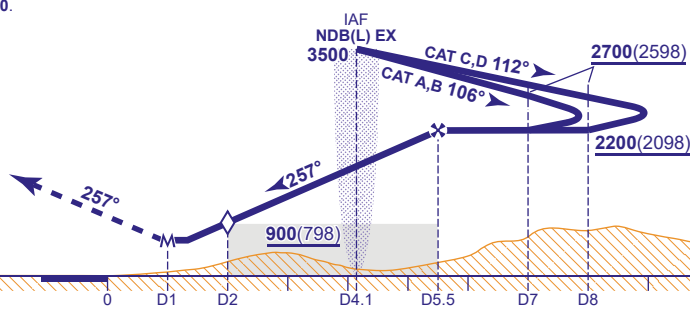
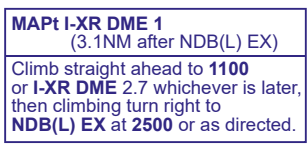


| | | | | |
|------|------------------|--------------------|--|--|
| APP | 128.980 | EXETER APPROACH | AD ELEVATION 102 | LOC/DME/NDB(L) RWY 26 (ACFT CAT A,B,C,D) |
| TWR | 119.805 | EXETER TOWER | THR ELEVATION 102 | |
| RAD | 128.980, 123.580 | EXETER RADAR | OBSTACLE ELEVATION 1527 AMSL (1425) (ABOVE THR) | |
| ATIS | 119.330 | EXETER INFORMATION | | |
| | | | BEARINGS ARE MAGNETIC | TRANSITION ALTITUDE 3000 |



| RECOMMENDED PROFILE Gradient 6.1%, 370FT/NM | | | | |
|---|------------|-----------------|------------|----------|
| DME I-XR | 5 | 4.1 (EX NDB(L)) | 3 | 2 (SDF) |
| ALT(HGT) | 2020(1918) | 1680(1578) | 1280(1178) | 900(798) |

Arrival not below MSA. Shuttle in hold if necessary to 3500.



| Aircraft Category | | A | B | C | D | Rate of descent | G/S KT | 160 | 140 | 120 | 100 | 80 |
|-----------------------|------------|----------|----------|-----------|-----------|------------------------------|---------|------|------|------|------|------|
| OCA (OCH) | Procedure | 630(528) | 630(528) | 630(528) | 630(528) | | FT/MIN | 990 | 870 | 740 | 620 | 500 |
| VM(C)OCA (OCA AAL) | Total Area | 700(598) | 900(798) | 1090(988) | 1090(988) | NDB(L) to MAPt (3.1NM) | MIN:SEC | 1:09 | 1:19 | 1:33 | 1:51 | 2:19 |

NOTE 1 Lowest altitude to commence procedure from hold after a missed approach is **2500**.
2 ATC will normally require aircraft to hold not lower than **3500**.
3 LOC range is restricted to 18NM within 10° and 10NM within 35° of C/L.

CHANGE (11/23): VM(C)OCA(OCH AAL) CAT B.